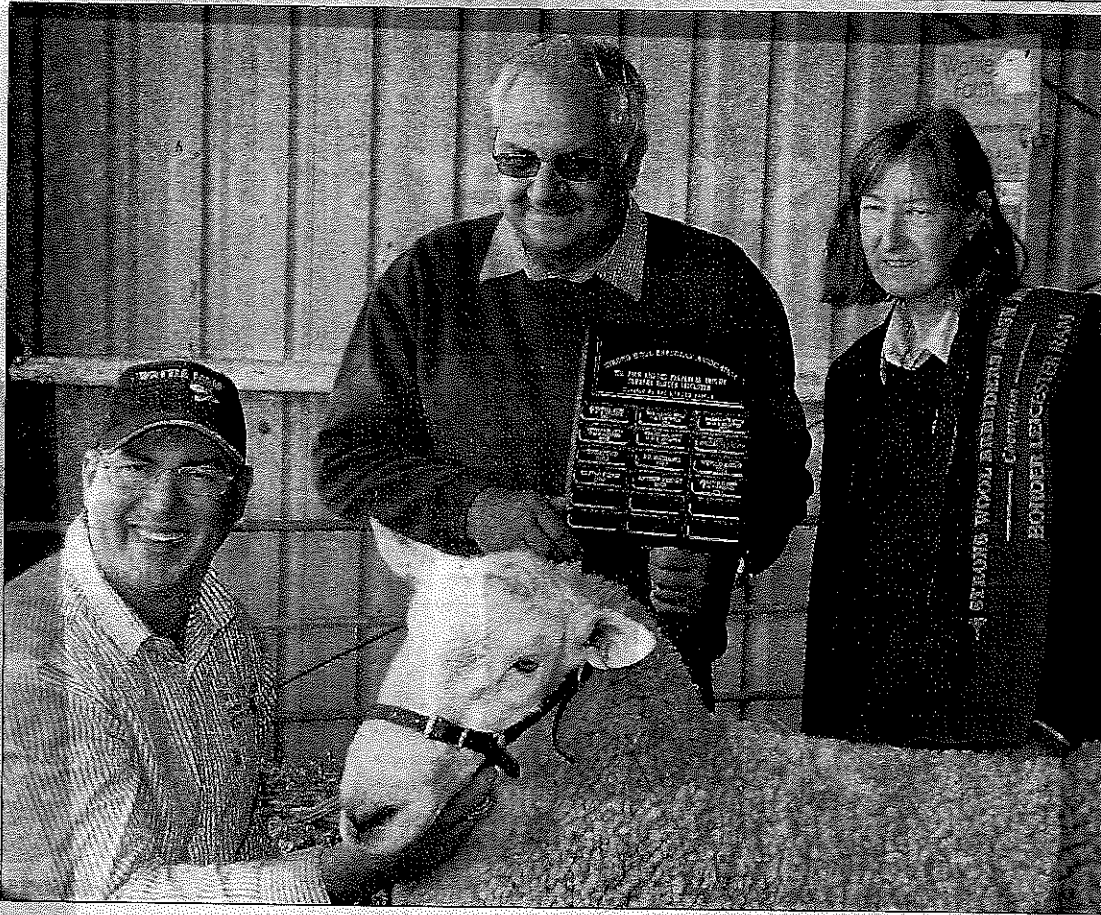


'ENSIGN' 6/5/15

www.benallaensign.com.au



Grand Champion: Wattle Farm Gold II, Champion Border Leicester ram with owner Jeff Sutton and the judges.

Sheep on show

By Libby Price

Luxurious strong wools from rare breeds of sheep were on display at this year's annual Strong Wool Sheep and Wool Fair in Benalla last Sunday.

Winner of the Champion Ram for the feature breed, Border Leiscesters, was Wattle Farm Gold II owned by Jeff Sutton of Temora, NSW.

Gold II had already taken out champion ram at the Australian Sheep and Wool show at Bendigo in 2013, and Champion Border Leicester and Supreme Exhibit at the Royal Canberra Show last year.

This year the show focused on wool crafts with junior and open classes for garments, scarves and any other item made from 100 per cent wool.

There were crafts stalls and demonstrations involving strong wool including spinning yarn using a spinning wheel.

Another feature was the

