

NSW State Sheep Show Report

Wattle Farm's two top Border ring

By MARK GRIGGS

FOLLOWING junior and grand Border Leicester championship awards at Sydney Royal Show earlier this year, Wattle Farm Three Wishes added both an interbreed long wool and supreme ewe laurel to its impressive list of accolades at the 2015 Landmark NSW State Sheep Show.

Shown by Jeff Sutton and family of Wattle Farm stud, Temora, the ewe was sired by Coolawang Impact, the 2013 Adelaide Royal champion ram.

Mr Sutton had earlier won the junior ram championship with Wattle Farm Rock 'n' Roll, a son of Wattle Farm Impact, prior to the ram being awarded breed grand champion by judge, Ivan Chandler, Chandivan stud, Barham.

This ram was named interbreed long wool champion later in the show.

Mr Chandler said he would "love" to take home both ewe broad ribbon winners and the rams were excellent examples of the breed.

Runner-up in most classes and championships was the Bindaree

stud operated by Reg and Robyn Sweeney and daughter, Rowena, "Pinehurst", Merrygoen, who exhibited the reserve senior champion ram and ewe and reserve junior champion ewe to become the section's most successful exhibitor.

Reg Sweeney said the reserve senior ewe, rising four years of age, had already mothered a set of twins and two sets of triplet lambs.

She had won the woolly over two years class and was sired by Ellingerrin Vintage, and was reserve senior champion at the Australian Sheep and Wool Show, Bendigo, Victoria, last year.

Brothers Ben, Daniel and Matthew Simmons of Talbragar stud, Leadville, exhibited the reserve junior ram and the winning group of three.

Border Leicester

Junior and grand ram: Wattle Farm,

Temora. Res: Talbragar, Leadville

Grand res: Bindaree, Merrygoen.

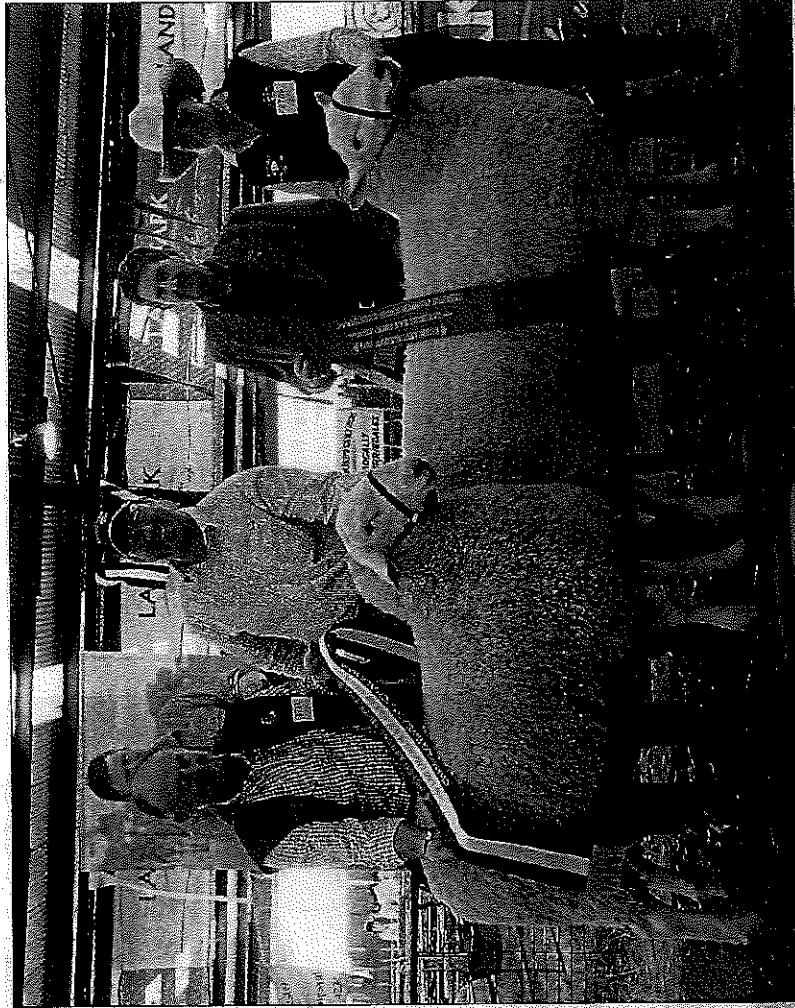
Junior, grand and supreme ewe:

Wattle Farm. Res: Bindaree.

Grand res: Bindaree

Best head: Bindaree

LEFT: Peter Matus, Tara stud, Rockley, sashes grand champion Border Leicester ram, shown by Jeff Sutton, Wattle Farm stud, Temora, with the judge, Ivan Chandler, Chandivan stud, Barham, sashing the reserve exhibited by Rowena Sweeney, Bindaree stud, Merrygoen.



the
temj
Ow
swab
lect a
genoh
ic gr

of fire