

Interstate studs strike

By ANNABELLE BEALE

INTERSTATE visitors claimed the two top gongs at the Royal Melbourne Show prime lamb interbreed competition.

In the female section, the five judges recognised excellent examples of the breeds and chose a striking Border Leicester ewe, exhibited by NSW breeder Jeff Sutton, Wattle Farm, Temora for the champion position and a large-framed Suffolk, exhibited by Deppeler, Derrinallum, as reserve champion.

The Wattle Farm ewes were praised as a magnificent example of the breed, with a terrific carcass wrapped in an ideal fleece.

Judge Dianne Huett sashed the ewe and said it set a new standard for the Border Leicester breed.

But it was the Day family of Bordertown, South Australia, that had the best day out.

Brothers Alastair Day, Allendale Suffolks, and Lachy Day's, Days Whiteface, White Suffolk sashing as champion interbreed ram and reserve title, respectively, were some of many accolades the family

Interbreed

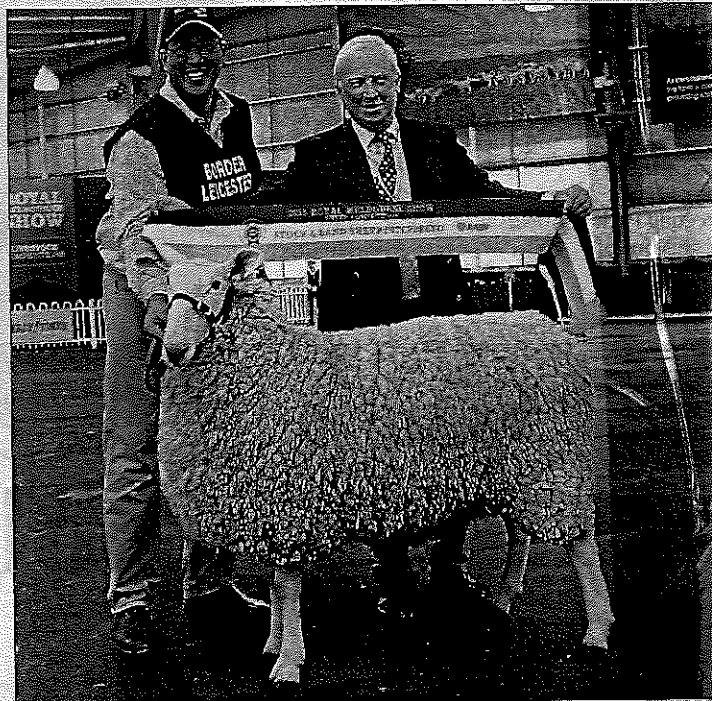
Champion ram: Suffolk - Allendale, Bordertown, SA. **Res:** White Suffolk Days Whiteface, Bordertown, SA
Champion ewe: Border Leicester Wattle Farm, Temora. **Res:** Suffolk - Deppeler, Derrinallum, Vic.
Sires progeny group: Poll Dorset - Derby Downs, Marong, Vic.
Breeders Group: Poll Dorset - Allendale
Ram trifecta: Poll Dorsets - Allendale and Leenala, Naracoorte, SA

received in the sheep arena during the weekend.

Industry stalwart and show steward Bruce Starritt, Tatura, Vic, said it was one of the best performances by one family, across several breeds, he had ever seen at a show.

"The Day family has proven they are the leading stud masters in Australia - just reading their performance (at Melbourne) they've taken out champion and reserve (interbreed ram) and had nine sheep from three breeds in the top 12 of the interbreed group judging," Mr Starritt said.

Allendale's champion interbreed ram was praised for his structure



Wattle Farm principal Jeff Sutton, Temora, exhibited the champion interbreed ewe, sashed by RASV president Stephen Spargo.

and outstanding growth for age.

The August 2014-drop ram weighed 135.5 kilograms and measured a fat depth of 10 millimetres, muscle depth of 49mm, muscle width of 100mm and muscle area of 38cm.

Of the brother-to-brother battle, Allendale principal Alastair Day said it was a thrill for the family.

"When you have respected sheep breeders judge your sheep and give you an award, it isn't a lottery, it is very humbling," he said.

Their success continued with Allendale Poll Dorset's taking out the breeders group and two rams in the champion ram trifecta team, sashed to Poll Dorset breed which

included a ram from Leenala Naracoorte, South Australia.

The sires progeny group was awarded to a Poll Dorset team exhibited by Derby Downs, Marong, Victoria, which judge Kevin Moores, Campania, Tasmania, said was sheep that progressed the breed.

The interbreed win topped a stellar show for stud principal D McKinnon.

"It is encouraging to win a prestigious award which is proof we are selecting the right sires," he said.

"To put three (stud-bred Poll Dorsets) together in a group awarded the champion sash is a satisfying achievement for a stud breeder."



LEFT: The Day family of Bordertown, South Australia, Lachy, Angus, Prue, Alastair and Graham (front) with the interbreed champion ram (right) sashed to the Allendale Suffolk exhibit and reserve champion (left) sashed to the Days Whiteface White Suffolk exhibit.