

Junee Show entries up by 50 per cent

By STEPHEN BURNS

A HOT day didn't deter a great crowd from attending the 2014 Junee Show.

With a full pavilion, Belling Hall, Ladies Marquee and sideshow alley there was plenty for all to see and enjoy.

Led by president Peter Commens the crowd gathered for the opening ceremony and obeyed a minute's silence in memory of the late Patrick Keast.

Mr Keast had been a member of the Junee Show Society from 1972 and had served as president for five years.

He had also been a member of the Agricultural Societies Council of NSW since 2000, and was an honorary life member at the time of his passing.

2013 Miss Junee Showgirl Jasmin Corbett opened the show.

Pavilion entries were up by fifty percent, mostly because of the increase in interest from local schools.

There were 17 very keen entrants in the junior judging competition.

Jasmine Nixon, Teys Australia, judged the competition and said it

Charolais, Tumut, placed first ahead of Dean McGuire, Diamond Park Livestock, Tarcutta.

Her brother Jesse Belchambers came in third position.

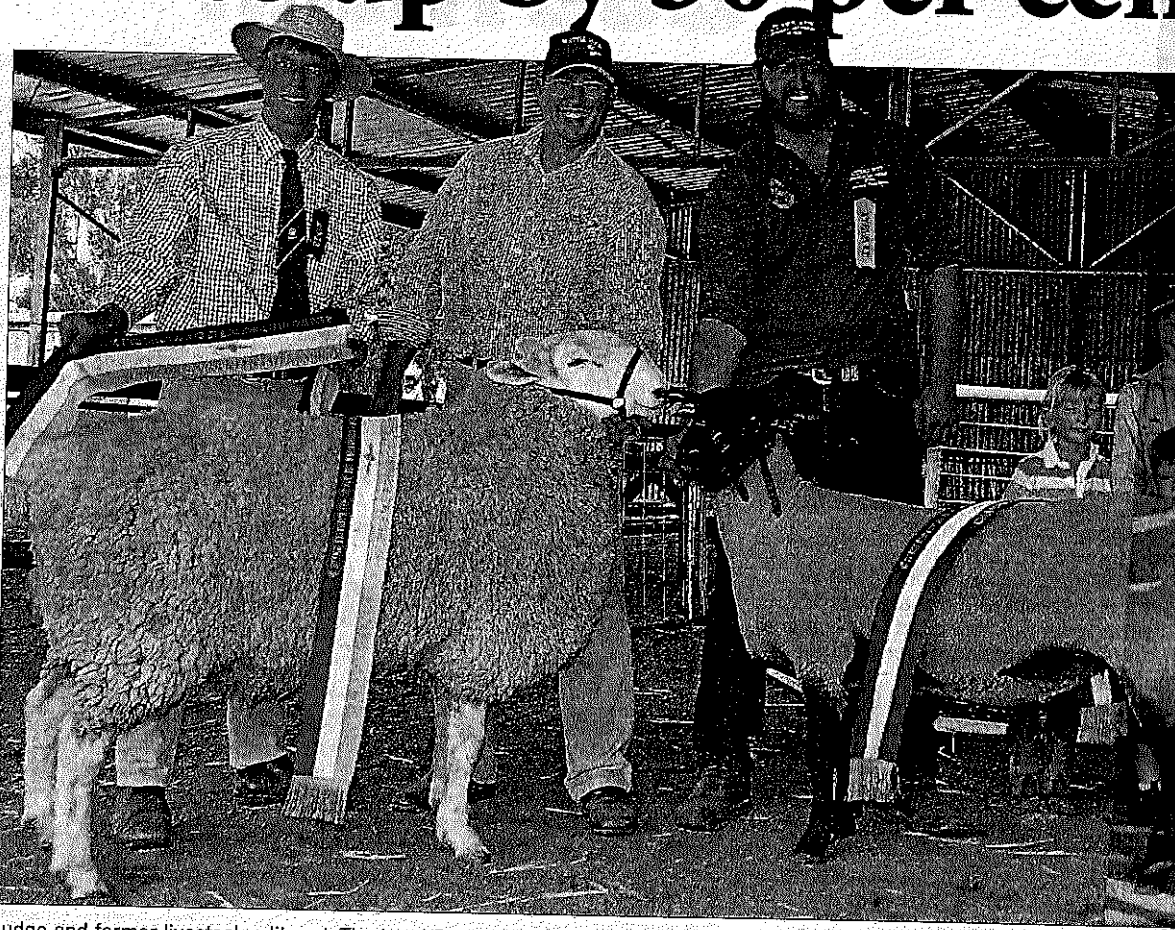
A Border Leicester ram entered by Jeff Sutton, Wattle Farm Border Leicester stud, Temora, was awarded the Supreme Interbreed Exhibit of the show which was judged by Brendan Mansbridge, Brooklyn Park Poll Dorsets, Eugowra.

Mr Sutton also exhibited the interbreed champion ewe of the show, a Suffolk bred from his Wattle Farm Suffolk stud, Temora.

A Simmental heifer named Tennyson Vale Jacqui bred by Ian and Cheryl Baldry, Tennyson Vale Simmental stud, Junee, was judged grand champion and supreme exhibit from a small showing of heifers by Jasmine Nixon, Teys Australia, Wagga Wagga.

Ray Norman, "Glenbrook", Illabo, exhibited the champion fleece of the show – an 18.5 micron Merino fleece showing great style and length.

The champion bird of the show was exhibited by Year 8 students at Yanco Agricultural High School Heather Robinson and Abbey



Judge and former livestock editor of The Land