

# Wattle Farm first hits \$2600

By BRENDAN MANSBRIDGE

A HIGHLY successful year on the show circuit helped to generate interest from interstate buyers at the inaugural Wattle Farm Border Leicester sale last Friday.

Held by the Sutton family on their property at Temora, selected stud rams sold to the sale's top price of \$2600 and averaged \$2014, clearing all of the seven offered.

Stud ewes were in strong demand, with a 100 per cent clearance of the 20 offered being achieved, to a top price of \$650, three times, and an average of \$460.

In the flock rams, 51 of the 70 offered found new homes for an average of \$774, topping at \$1150 twice.

Securing the top stud ram for \$2600 were the Corkhill family, Normanhurst Border Leicesters, Boorowa, for Wattle Farm 20/11.

The ram was a son of the 2010 Australian young Border Leicester ram of the year, Kelso Dynasty Gold.

Representing the family at the sale, Ashley Corkhill said that overall the ram was very correct and would cross well with their sheep.

"His wool type is very similar to our sheep, and he's got plenty of style and

length," Mr Corkhill said.

The second-top priced ram went to Mike and Carol Sudholz, Staffa Border Leicesters, Goroke, Victoria, for \$2500.

Mr Sudholz said they had first seen the Wattle Farm sheep at the Australian Sheep and Wool Show at Bendigo, and had travelled to the sale with the intention of purchasing stud ewes.

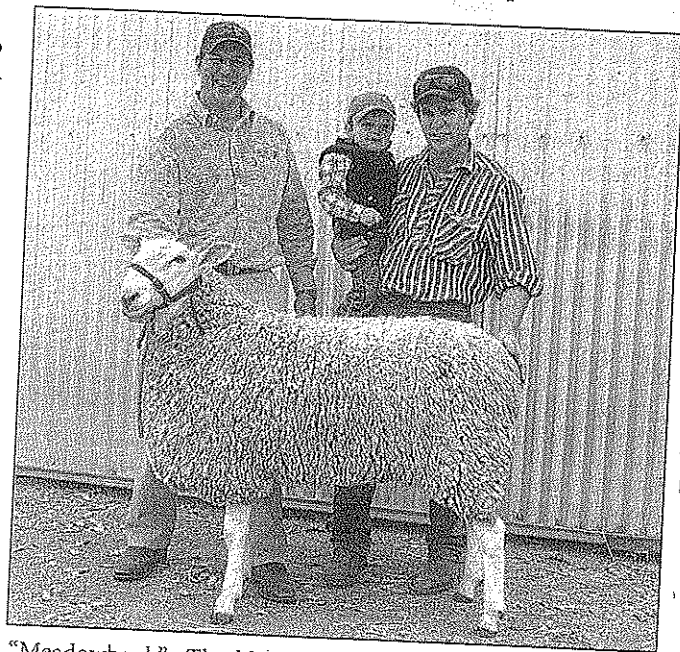
However, after seeing the quality of the rams on offer they selected a big, upstanding ram by a Cadell Romeo sire to join their stud.

The Sudholzs also secured the ewes they were after, purchasing six to the sale's top price of \$650 and averaged \$600.

Other stud rams sold at \$2100 to David Johnson, "Charmwood", Crowther; \$2000 to Ian Roan, Yallaroo Border Leicesters, Glencoe, and \$1900 to K.C. and S.M. Campbell, Coolangatta Estate Border Leicesters, Wangaratta, Vic.

Flock ram buyers commented on the evenness of the draft on offer, with Robert Sheridan, "Woodstock", Junee, selecting one of the \$1150 equal top-price rams among his two which averaged \$1025.

The other \$1150 ram went to Joe Mooney, Mooney Bimbi Partnership,



LEFT: Jeff Sutton, Wattle Farm Border Leicesters, Temora, and Ashley Corkhill, Normanhurst Border Leicesters, Boorowa, holding son Billy, 2, and the \$2600 top-priced ram.

"Meadowbank", Thuddungra, who purchased four rams to average \$988.

Charlie McGee, McGee Pastoral Company, Parkes, selected a stud ram at \$1500 as well as a flock ram at \$1050, while Ross Berryman, "Man-or-bar", Moama, purchased three flock rams to average \$983.

The day's volume buyers were Guy Noble, Corrie Vale Pastoral Company,

"Greylands", Woodstock, who took home 14 rams to average \$689, and Michael Thomas, "Heaton Park", Gubbata, who picked up eight rams to average \$756.

Selling agents were La-Wagga Wagga and Holler and Property, Young Croker and Steve Tioneers.