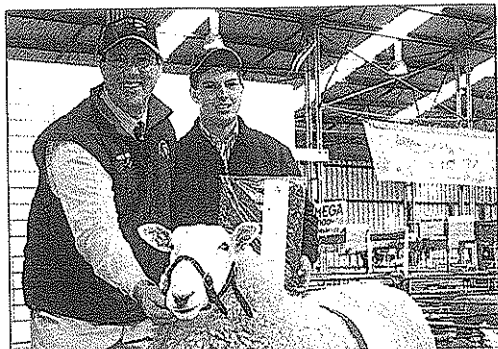


Wattle Farm Editorial



Jeff Sutton proudly displays his prize ram that won Supreme Long Wool Champion at the recent Hamilton P&A Society Sheepvention

Wattle Farm Border Leicester Stud is a relative newcomer to the stud stock industry. The stud was formed in 2005 using stud rams and ewes from the highly regarded Harper family's Cadell Stud at Ariah Park.

Since that time Jeff Sutton and his Wattle Farm Border Leicesters have won a host of awards and trophies including Australian Champion Ram, judged the best this nation can produce, this award has been won on a number of occasions. Recent success includes Grand Champion Ram at Sheepvention at Hamilton along with the Sheepvention Supreme Longwool Interbreed title for 2013.

Wattle Farm held its inaugural Border Leicester sale last year and saw stud rams average \$2200, 50 flock rams averaged \$700 and 21 stud ewes averaged \$450. Jeff's ultimate goal is to "influence the stud ram market and, to not only have a solid base of commercial clients, but to be able to sell high quality semen and rams to studs". Jeff is equally proud of the fact that three new Border Leicester Studs have already been established on the Wattle Farm genetics.

We highly recommend this quality line-up of rams for the 2013 sale. For those of you wishing to source replacement Border Leicester rams, consider the high standard of rams on offer at Wattle Farm.

For further enquires please contact James Croker on 0427 753 533 or David Coleman on 0417 929 131.