

# Wattle Farm to \$3500 top

By CARA  
JEFFERY

**B**ORDER Leicester rams sold to \$3500 at the Sutton family's fourth annual Wattle Farm stud sale held near Temora last Friday.

In the breakdown, four of the six stud rams offered were sold under the hammer for a top price of \$3500 to average \$2626.

The top-priced ram was secured by relative newcomer to the breed Rick Hoolihan, Rose-Lea Border Leicester stud, Rydal, who established his Wattle Farm daughter stud last year.

Mr Hoolihan said genetics and wool type were what sold him on the ram.

The 2014-drop ram was from a Coolawang sire — the same sire that bred the Sutton's ewe Three Wishes, which took out both the supreme interbreed at NSW Sheep Show at Dubbo and the Royal Melbourne interbreed championship ewe sash this year.

The ram recorded a 2.8 kilogram weaning weight, 4.4kg post weaning weight and 108.10 Border \$Index figure.

Mr Hoolihan said the ram's fine wool type would suit the high rainfall area where he farmed.

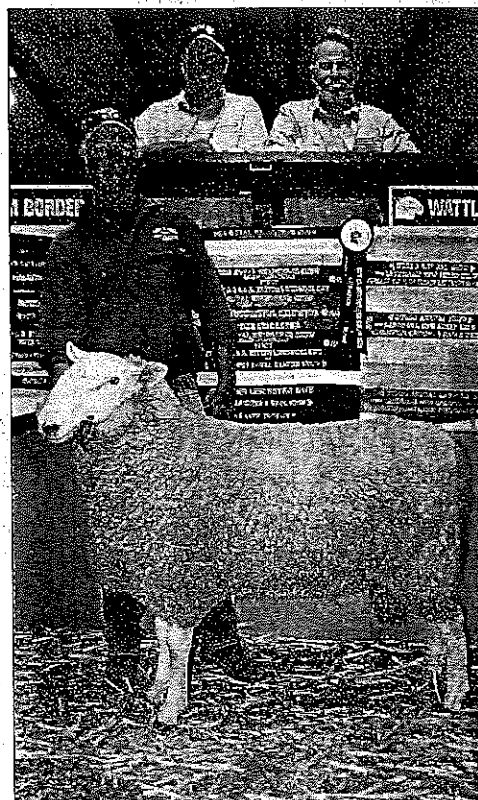
He said there was growing demand for Border Leicester rams in his district with six of the 10 ram lambs (July/August 2015-drop) he had on the ground already sold and ready to go when they were of age.

Mr Hoolihan also secured two stud ewes for \$400 and \$500 each.

Bruce Milne, Bairnsdale, Victoria, bought a stud ram for \$2000 and two stud ewes for \$425 and \$350.

The best price paid for flock rams was \$1800 and 60 of the 76 offered were sold at auction to average \$1170.

Mooney Bimbi Partnership,



Rick Hoolihan, Rose-Lea Border Leicester stud, Rydal, bought the \$3500 top-priced ram at the Sutton family's Wattle Farm Border Leicester sale held near Temora on Friday. Pictured holding the ram is Mr Hoolihan with Wattle Farm stud vendor Jeff Sutton and Mr Hoolihan's wool broker Greg Andrews, Schute Bell, Sydney.

bought two rams for \$1600 and \$1500; the Maclure family, Tarcutta, bought four rams for a top of \$1500, twice, to average \$1238, and Clemson Partners, "Lilydale", Burcher, secured nine rams to \$1600 (twice) to average \$1311.

At auction 23 of the 25 stud ewes offered were sold for a top of \$650 to average \$414.

Volume buyer was J.D. Baker and Company, Springhurst, Victoria, who bought 15 stud ewes for a top of \$475 to average \$380.

Vendor Jeff Sutton said they were happy with the return of loyal clients and excited to see new clients at the sale, many travelling from afar.

"There is confidence in the Border Leicester ram and first cross ewe market with quality sheep making