

# Wattle Farm, Normanhurst share spoils

BY EMMA DOWNEY

**J**EFF and Diane Sutton's Wattle Farm stud, Temora, dominated the Border Leicester broadribbon chase in tight competition with two other southern studs at this year's Sydney Royal.

From a field of 86 head, the Suttons exhibited the senior and grand ram, reserve senior ram, and reserve junior ram.

Border Leicester judge Ian Micheel, Campaspe River Border Leicester stud, Echuca, Victoria, said there had been "no tail" in the Border exhibits which made his job difficult at times.

However, Wattle Farm's senior and grand ram, Wattle Farm Gold 1, drawn from the ram over two years class, stood out for its correct carriage, and "excellent fleece for his age".

"The ram showed good bone structure and was structurally correct," Mr Micheel said.

Mr Sutton said Gold 1 had been reserve grand champion ram at 2012 Melbourne Royal, and was a son of the 2010 Australian Border Leicester Young Ram of the Year, Kelso Dynasty Gold, which he bought from the from Kelso stud, Tatura, Vic, that same year.

"Unfortunately, we only got one season out of Dynasty Gold as he died suddenly, leaving only 19 lambs behind, and our senior ram was the best of the drop," Mr Sutton said.

Wattle Farm's reserve senior ram, Wattle Farm Bonn Justice, was sired by a Cadell

Bonn ram also bought in 2010.

Mr Sutton said the Cadell ram's progeny had been placing well across Riverina shows since 2012.

Wattle Farm's reserve junior ram, Wattle Farm JFK, was by another Cadell ram, Cadell Hallmark, which Mr Sutton bought in 2009.

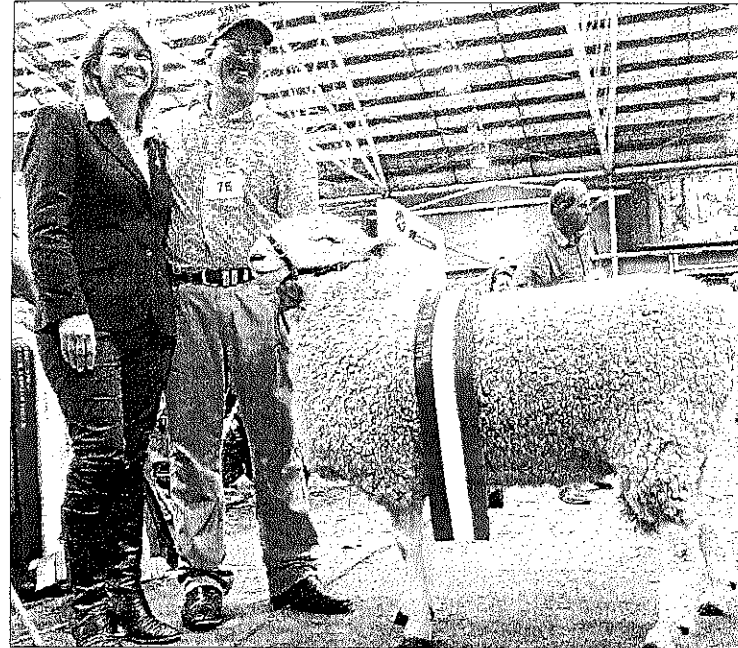
Wattle Farm, which brought a team of 20 sheep to Sydney, also shone in the group classes, winning the Peter Taylor group of three, the G.B. Richardson team of four sheep, and best team of six sheep.

As a result, Wattle Farm was named the most successful exhibitor.

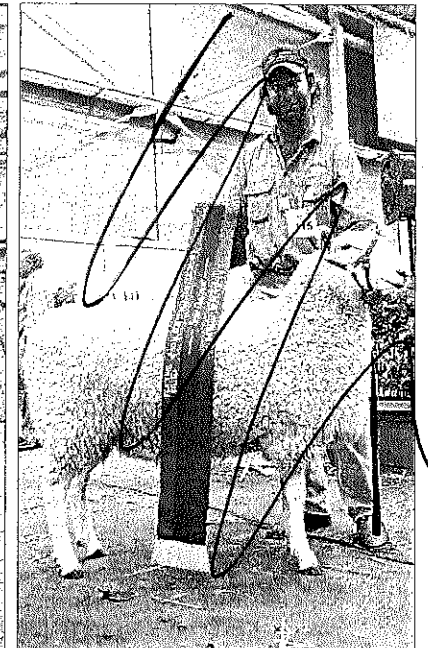
The Corkhill family's Normanhurst stud, Boorowa, exhibited the junior and reserve grand ram, Normanhurst Shepherd, drawn from the milk-tooth ram class, which was also the winner of the best-headed Border Leicester ram, as well as the senior and grand ewe, tag 40/2011 drawn from the ewe two years and over class.

Shepherd was a Romeo ram sired by Cadell 660/07 which the Corkhills bought for the top price of \$5600 at the 2008 Cadell on-farm sale.

It was the first major win for the Corkhill's senior and later grand ewe, 40/2011, which was sired by Normanhurst 172/2008, the family's NSW State Sheep Show supreme exhibit at Dubbo in 2010 – the same year



NSW Department of Primary Industries Minister Katrina Hodgkinson and Geoff Sutton, Wattle Farm Borders, Temora, with the grand champion Border Leicester ram.



Tom Corkhill, Normanhurst Border Leicesters, Boorowa, with the senior and grand champion Border Leicester ewe.

Borders Leicesters were the feature breed.

Judge Mr Micheel said the grand ewe was well balanced and carried itself well.

"She shows good style, had plenty of fleshing and looks to have the ability to rear multiple lambs," he said.

Jamie and Tracey Buerckner's Bauer stud, Ariah Park, exhibited the junior and later reserve grand ewe, Bauer 90/13; reserve senior ewe, 405/12, and reserve junior ewe, 40/13.

Both the young champions – the grand ewe, 90/13, and the reserve, 40/13 – were sired by a Coolawang ram from Mundulla, South Australia.

The reserve junior champion ewe, 40/13, was champion ewe at Boorowa Show this year.

Bauer's reserve senior ewe, 405/12, was an embryo transfer lamb by Bauer Stockman – a sire used widely in the stud.

Stockman was a son of 2008 grand champion ram, Bauer jackpot.

## BORDER LEICESTER

**Junior and reserve grand ram:** Normanhurst, Boorowa. **Res:** Wattle Farm, Temora.

**Senior and grand ram:** Wattle Farm. **Res:** Wattle Farm.

**Junior and reserve grand ewe:** Bauer, Ariah Park. **Res:** Bauer.

**Senior and grand ewe:** Normanhurst. **Res:** Bauer.

