

BY EMMA DOWNEY

JEFF and Diane Sutton's Wattle Farm stud, Temora, dominated the Border Leicester broadribbon chase in tight competition with two other southern studs at this year's Sydney Royal.

From a field of 86 head, the Suttons exhibited the senior and grand ram, reserve senior ram, and reserve junior ram.

Border Leicester judge Ian Micheel, Campaspe River Border Leicester stud, Echuca, Victoria, said there had been "no tail" in the Border exhibits which made his job difficult at times.

However, Wattle Farm's senior and grand ram, Wattle Farm Gold 1, drawn from the ram over two years class, stood out for its correct carriage, and "excellent fleece for his age".

"The ram showed good bone structure and was structurally correct," Mr Micheel said.

Mr Sutton said Gold 1 had been reserve grand champion ram at 2012 Melbourne Royal, and was a son of the 2010 Australian Border Leicester Young Ram of the Year, Kelso Dynasty Gold, which he bought from the from Kelso stud, Tatura, Vic, that same year.

"Unfortunately, we only got one season out of Dynasty Gold as he died suddenly, leaving only 19 lambs behind, and our senior ram was the best of the drop," Mr Sutton said.

Wattle Farm's reserve senior ram, Wattle Farm Bonn Justice, was sired by a Cadell

Bonn ram also bought in 2010.

Mr Sutton said the Cadell ram's progeny had been placing well across Riverina shows since 2012.

Wattle Farm's reserve junior ram, Wattle Farm JFK, was by another Cadell ram, Cadell Hallmark, which Mr Sutton bought in 2009.

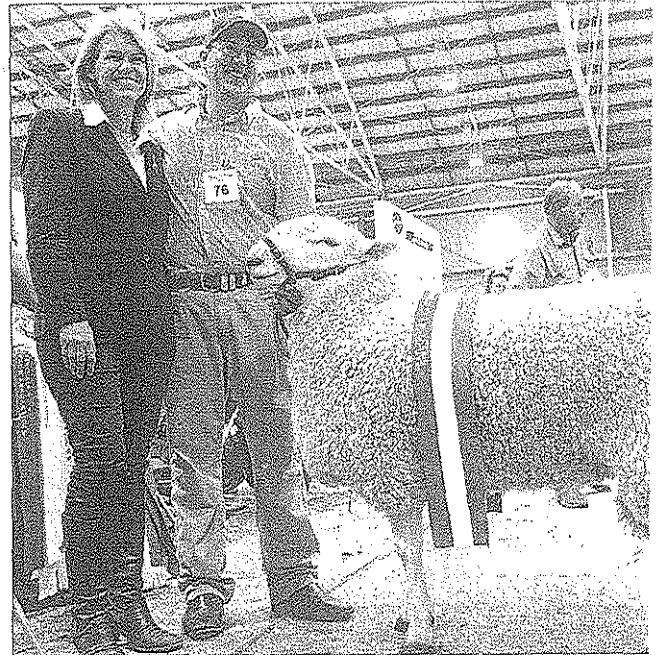
Wattle Farm, which brought a team of 20 sheep to Sydney, also shone in the group classes, winning the Peter Taylor group of three, the G.B. Richardson team of four sheep, and best team of six sheep.

As a result, Wattle Farm was named the most successful exhibitor.

The Corkhill family's Normanhurst stud, Boorowa, exhibited the junior and reserve grand ram, Normanhurst Shepherd, drawn from the milk-tooth ram class, which was also the winner of the best-headed Border Leicester ram, as well as the senior and grand ewe, tag 40/2011 drawn from the ewe two years and over class.

Shepherd was a Romeo ram sired by Cadell 660/07 which the Corkhills bought for the top price of \$5600 at the 2008 Cadell on-farm sale.

It was the first major win for the Corkhill's senior and later grand ewe, 40/2011, which was sired by Normanhurst 172/2008, the family's NSW State Sheep Show supreme exhibit at Dubbo in 2010 – the same year



NSW Department of Primary Industries Minister Katrina Hodgkinson Sutton, Wattle Farm Borders, Temora, with the grand champion Border ram.

Borders Leicesters were the feature breed.

Judge Mr Micheel said the grand ewe was well balanced and carried itself well.

"She shows good style, had plenty of fleshing and looks to have the ability to rear multiple lambs," he said.

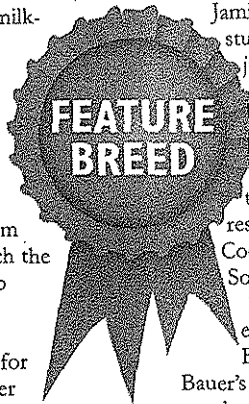
Jamie and Tracey Buerckner's Bauer stud, Ariah Park, exhibited the junior and later reserve grand ewe, Bauer 90/13; reserve senior ewe, 405/12, and reserve junior ewe, 40/13.

Both the young champions – the grand ewe, 90/13, and the reserve, 40/13 – were sired by a Coolawang ram from Mundulla, South Australia.

The reserve junior champion ewe, 40/13, was champion ewe at Boorowa Show this year.

Bauer's reserve senior ewe, 405/12, was an embryo transfer lamb by Bauer Stockman – a sire used widely in the stud.

Stockman was a son of 2008 grand champion ram, Bauer Jackpot.



BORDER LEICESTER
Junior and reserve g
 Normanhurst, Boorowa. Res:
 Temora.
Senior and grand ra
 Res: Wattle Farm.

Champion exhibits and some of the trophies and ribbons he has won at this year's Sydney Royal Easter Show.



Sydney wins for local breed

Marlo Brown

While it is common for Sydney Royal Easter Show patrons to come away from the show with a smile on their faces after riding the rides, purchasing a show bag, and consuming an obligatory dagwood dog, local stud producer Jeff Sutton left this year's Easter show smiling for a very different reason.

Mr Sutton, who began showing sheep at the Temora Show in 2008, has already taken out six awards at this year's Royal Easter show, with several more expected before the show's conclusion next week.

The local farmer described the wins to date as phenomenal, having entered the Sydney show since 2009, but never having such success as he has in 2014.

"This is the best show in Sydney we have ever had," Mr Sutton said this week.

"The crazy thing is there could be more wins for us, judging on how the sheep have gone so far."

Mr Sutton, who won the top award at the Easter show last year, has so far in 2014 taken home six awards including the J.A. and M.Y. Gilmore Perpetual Trophy for best pair, consisting of the Grand Champion male and female of each sheep breed exhibited in the Meat and Dual Purpose Sheep section.

As well as this, his stud have won Champion Senior Border Leicester Ram, Grand Champion Border Leicester Ram, the Brian Walton Memorial Perpetual Trophy, the G.B. Richardson Jubilee Perpetual Trophy, and the award for Most Successful Border Leicester Exhibitor.

The journey to the Easter show, for Mr Sutton's sheep, begins at the Henty Show, he explained, where, after receiving several awards, they

move to the Gundagai Show, followed by the Canberra Royal Show, and finally onto the big one; the Sydney Royal Easter Show.

"This year in Canberra we won the champion ewe, champion ram, and reserve champion ram, so that put us in good stead for the Easter Show."

Though the successes of 2014 were extremely unexpected for the local breeder, who got involved with showing sheep for the enjoyment of competition, and his love of animals.

"One of my initial goals in entering the competitions was to raise the profile of the stud, and to drive up the price of the rams," Mr Sutton explained.

In fulfilling this goal, he now runs sales from his private property, with buyers coming from interstate to get their hands on his sheep, which have been described as some of the best in the country.

"Competing has a value of our sheep in as well as the quality, they are doing so competing and against the best country."

Following the success at the Easter Show Sutton will now turn attention to the NSW Show in May, before to what is possibly the competition of its kin nation, the Australian and Wool Show at Ber Jerry.

While his shearer, with him, claiming to be the driving force behind the award-winning sheep Sutton said it was dedication and commitment to the and quality of the sheep that saw them come in consistent winners.

"I've really just got for the whole coming game now," Mr Sutton laughed.